

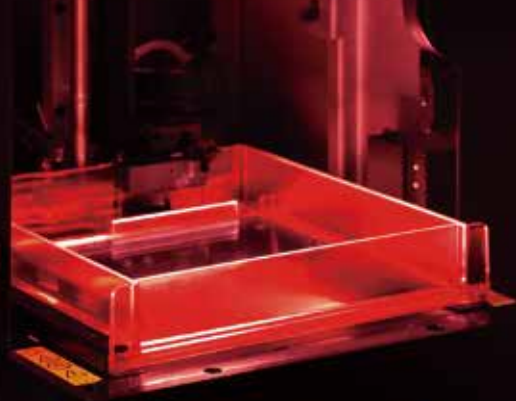


PartPro150 xP

Accelerate Ideas

Enlarged Build Area Ideal for More Applications

With a build area of 150 × 150 × 200 mm and a X-Y resolution of 130 microns, the PartPro150 xP is a SL printer ideal for producing parts which require smooth surface finishes.

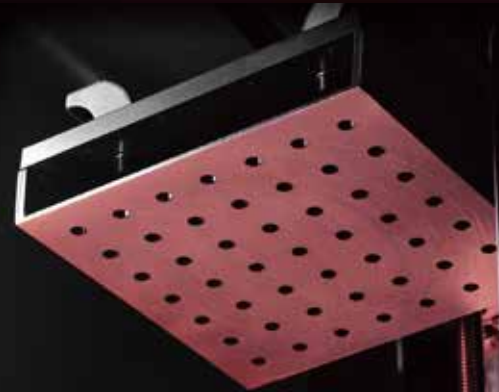


Precision Components & Long-life Tank

Heated resin system with a wiper provides stable production throughout the printing process. The PDMS tank features a patent-pending coating, that ensures a long-life and enables higher productivity.

Hands-free Auto-calibration

The PartPro150 xP features an auto-calibration that detects the positioning of the print platform and the resin tank. Simply load the resin to start the print.



Multiple Engineering Resins

You can always find the right material for your application including tough, high-strength, high temperature capable, flexible and more soon to be released XYZprinting materials.



Specifications

Print Technology	SL (Stereolithography)	Display Language	Multilingual
Max. Build Area (WxDxH)	5.9" x 5.9" x 7.8" (150 × 150 x 200 mm)	Printing Software	XYZprint AM ^{UV}
Layer Resolution	25 / 50 / 100 / 200* microns (*Material dependent)	Operating Systems	Windows 10 / 10 Pro (64-bit) macOS 10.12 and above
X-Y Resolution	130 microns	Power Requirements	100V - 240V 60W
Supported File Formats	.stl / XYZ format (.3ws / .3wn)	Connectivity	USB Cable / Wi-Fi / Ethernet
Light Source	UV Laser λ 405nm	Product Dimensions (WxDxH)	11.0" x 13.3" x 23.4" (280 x 337 x 595 mm)
Material Compatibility	ProBasic / ProPreciseSL	Product Weight	28.7 lbs (13 kg)
Display	5" Touch Panel LCD		

* All price, feature and specification are subject to change without prior notice.